



**SMK METHODIST, SIBU**

**卫理模范中学**

**THE CLUSTER SCHOOL OF EXCELLENCE**





**The Main Gate**

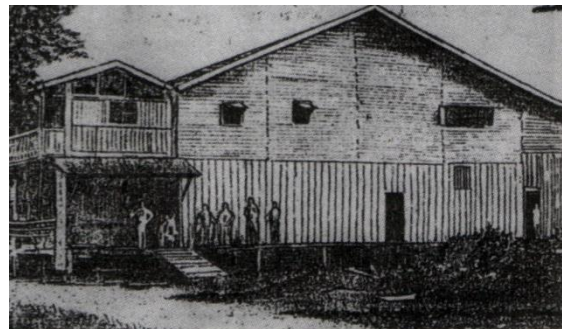




Rev. James Mathew Hoover  
(1872-1935)  
Founder of Methodist School  
卫理学校创办人：富雅各牧师



Anglo Chinese School at Sg. Merah  
First opened at 27 May 1903



Anglo-Chinese School at Rejang  
River Side 1905



1951

## **VISION**

Pendidikan Berkualiti 高素质教育  
Insan Terdidik 受训的人  
Negara Sejahtera 国家和平

## **MISI**

Melestarikan Sistem Pendidikan Yang Berkualiti  
Untuk Membangunkan Potensi Individu  
Bagi Memenuhi Aspirasi Negara  
持续高素质教育系统树立个人潜能以实现国家大志

Sibu Methodist Secondary school was founded in 1903 by Rev James Matthew Hoover, a missionary from the USA. It started as the Methodist Anglo-Chinese School at Sungai Merah and was moved to Rejang River Side in 1905. The school was later moved to the current site in 1951.

The Motto of the school is “Seek, Find and Serve”, which aims to nurture a generation that is passionate about equipping themselves with knowledge in order to better serve the community and country.

The school has an overall area of 8.109 acres. The school has a total of 79 classes divided into double sessions, morning and afternoon sessions. In 2017, the school population comprises of 159 teachers, 13 non- teaching staff and 1910 students.

In 2009, the school became a Cluster School of Excellence, as one of the high achieving schools in Malaysia from the aspects of school administration and student achievements. The niche areas of the school are English language and Culture.

Over the years, Methodist Secondary school has established linkages and networking with local as well as foreign institutions of higher learning, namely University Malaysia Sarawak (UNIMAS), St John’s University of Taiwan, Hwa Chong International School of Singapore and Handong Global University, South Korea.